

# QP400 COIL take-up machine

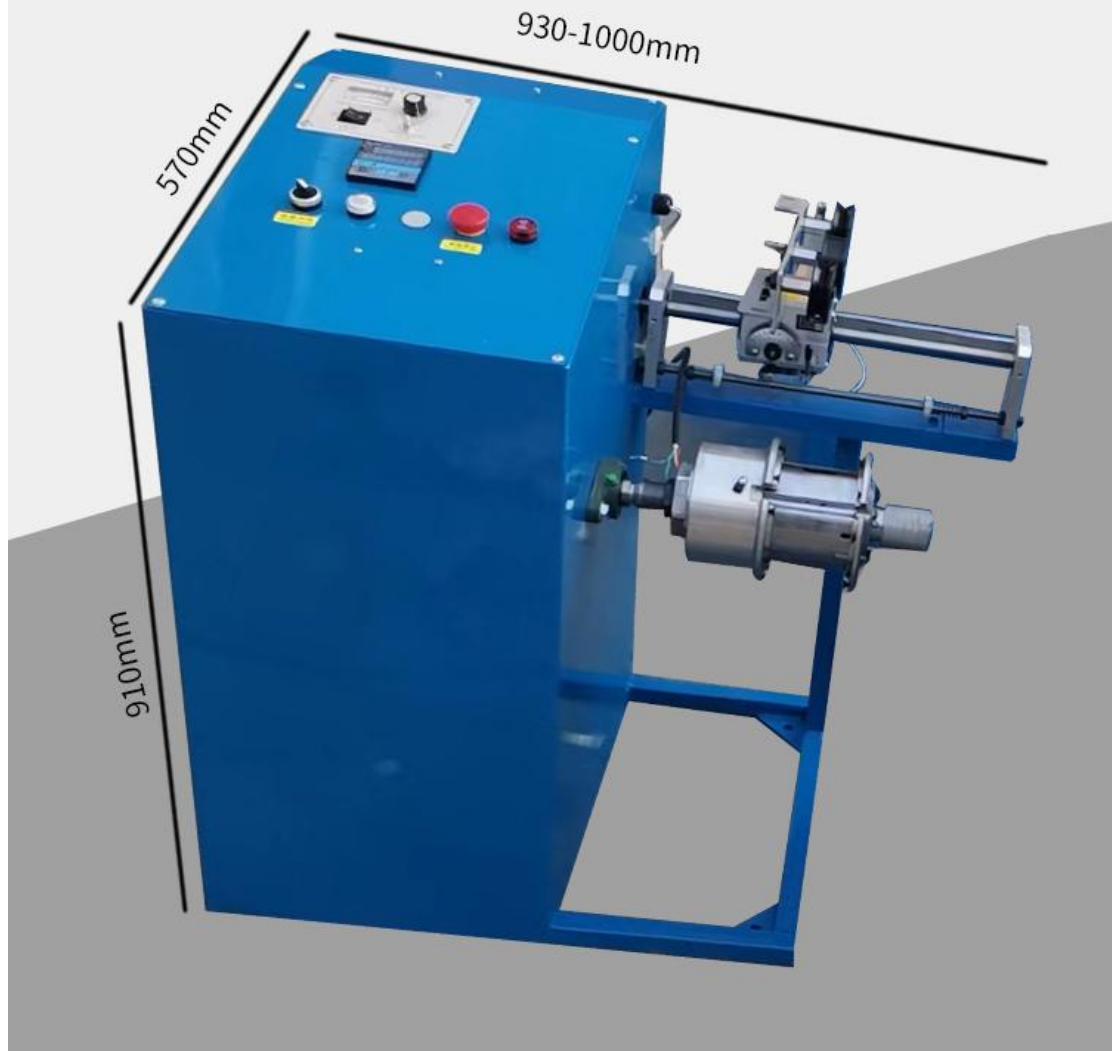


# PRODUCT PARAMETERS

Model Number	QP400
Wire Diameter	ø0.1-30mm round wire, flat wire, tube
Coil Specification	inner diameter 120, mmouter diameter 400mm
Take-up Speed	280 RPM (customizable speed)
Wiring Mode	rolling ring drive (L=450MM)
Load-Bearing	30kgs
Motor Power	0.75 kw
Voltage	Single-phase power 220v 50hz
Package Size	1.01 * 0.75 * 1 m
weight	112kgs

<b>Optional</b>	
<b>Meter Count</b>	Set the number of meters, and the machine will automatically alarm and stop when the number of meters is reached. -- include
<b>Magnetic Particle</b>	Equipped with assembly line to keep line speed synchronized and prevent strain
<b>Torque Motor Controller</b>	Automatically adjust the winding speed according to the torque

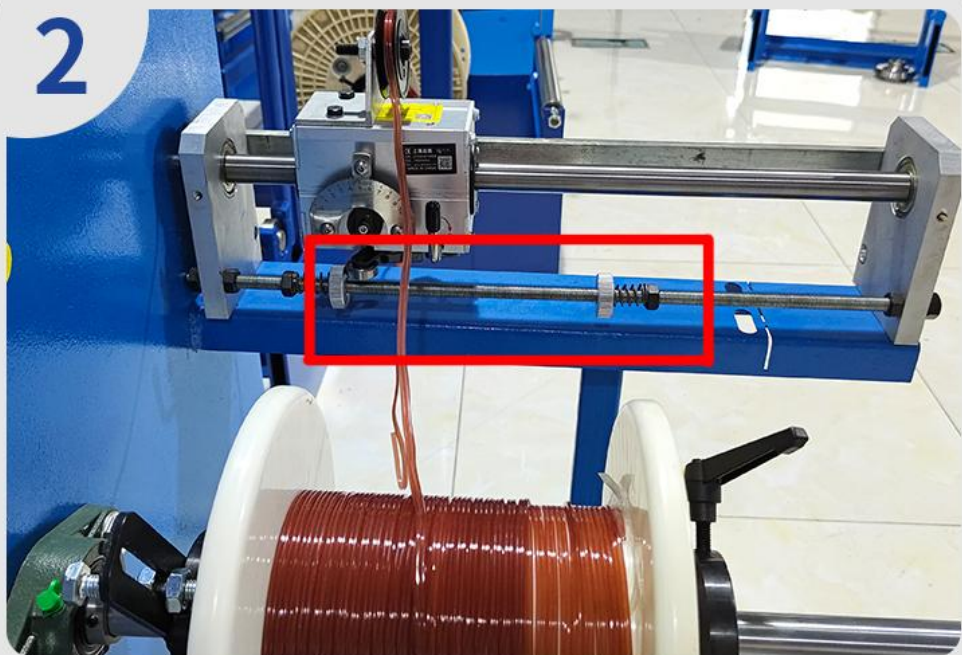
## Product Size:



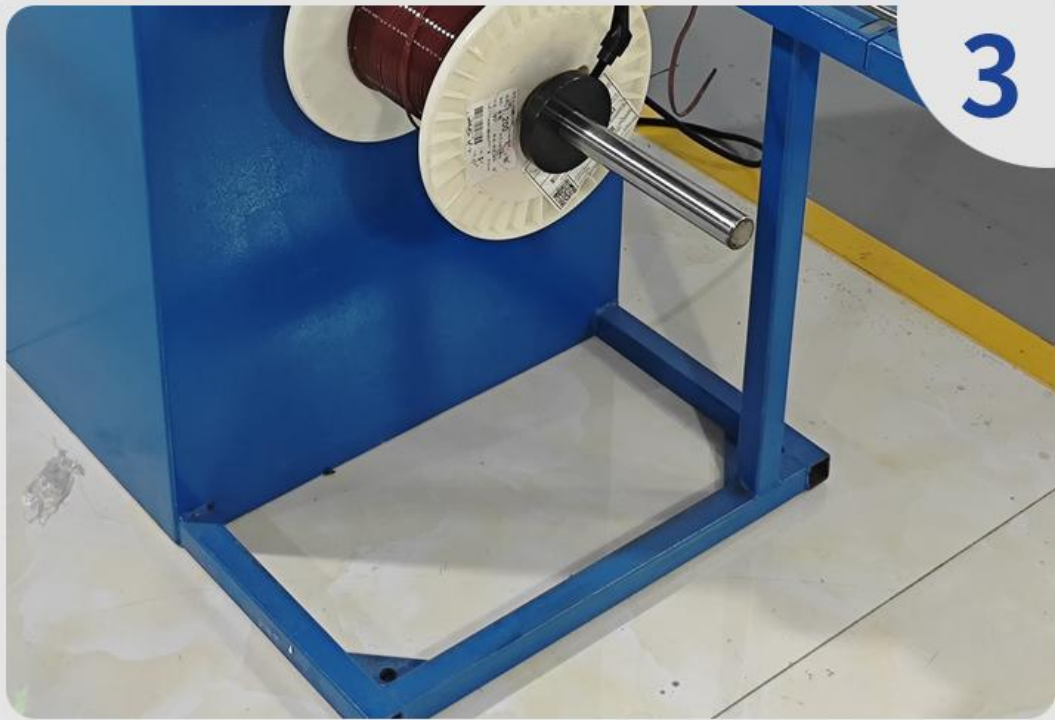
# PRODUCT DETAILS



Frequency converter, adjustable speed range



Light bar arranger with adjustable width for different bobbins



Fixed 'L' shape, the rack is more stable



With a slope, workers can operate more conveniently

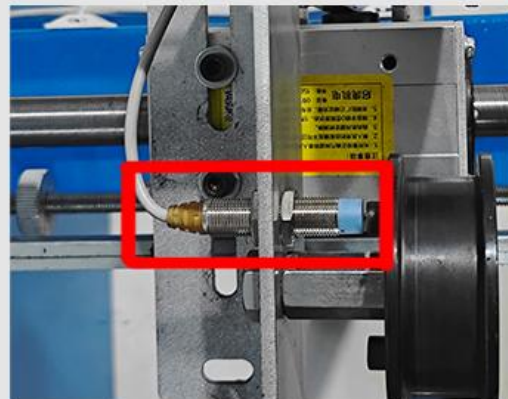
# PRODUCTS OPTIONAL

## Optional 1

Set the number of meters, and the machine will automatically alarm and stop when the number of meters is reached



● Meter Count



● Induction Probe

## Optional 2

Automatically adjust the winding speed according to the torque



- **Torque Motor Controller**

---

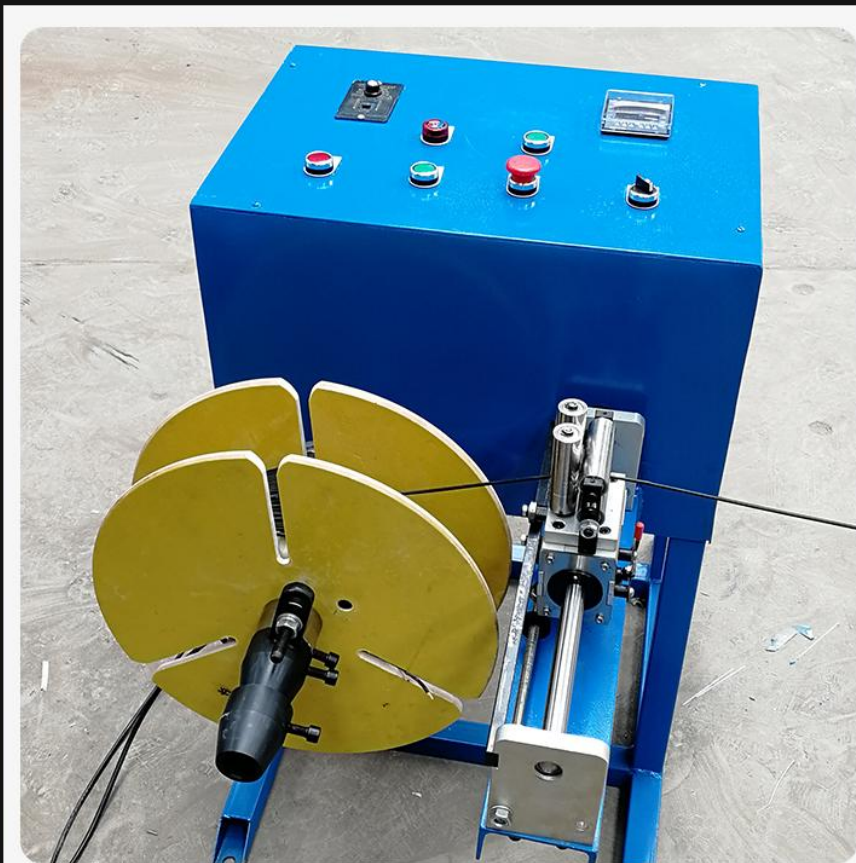
## Optional 3

Equipped with assembly line to keep line speed synchronized and prevent strain

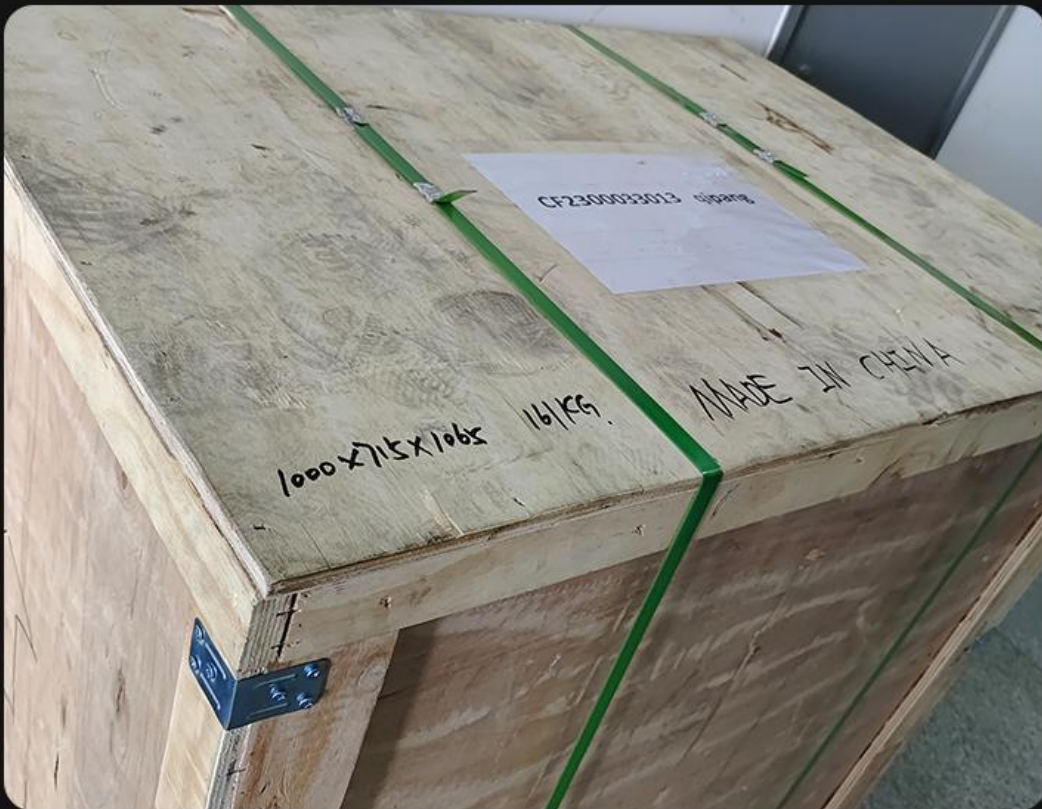


- Torque Motor Controller

# PRODUCT PICTURE



# FACTORY PACKAGING



# PRODUCTION LINE



# COIL EFFECT





### QP400 Coil Take-up Machine

Wire Diameter : 0.1-30mm round  
Wire Flat Wire Tube and So on  
inner dia : 120mm  
Outer Dia : 400mm  
Take-up Speed : 280RPM  
Load : 30kg



### QP630 Servo Precision Coil Wind Machine

Wire Diameter : 0.1-30mm round  
Wire Flat Wire Tube and So on  
inner dia : 120mm  
Outer Dia : 630mm  
Take-up Speed : 300m/min  
Load : 100kg



### QP630 Coil Take-up Machine

Wire Diameter : 0.1-30mm round  
Wire Flat Wire Tube and So on  
inner dia : 120/140/180/200mm  
Outer Dia : 630mm  
Take-up Speed : 300m/min  
Load : 100kg



### QP800 Coiling Take-up Machine

Wire Diameter : 0.1-30mm round  
Wire Flat Wire Tube and So on  
inner dia : 250/300/350mm  
Outer Dia : 800mm  
Take-up Speed : 0-250 RPM